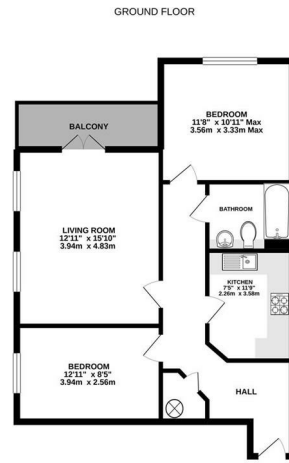




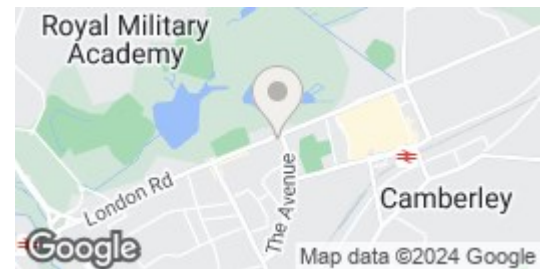
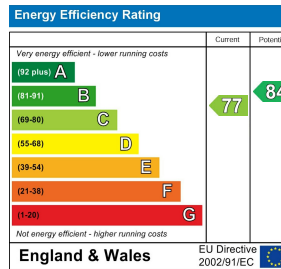
Dorchester Court, London Road | | Camberley | GU15 3JJ

£1,500 Per Month

Waterfords
Residential Sales & Lettings



Other views shown have been made to ensure the accuracy of the floor plan. The views are not intended to be a representation of the actual property. The views are not intended to be a representation of the actual property. The views are not intended to be a representation of the actual property.



Description

Waterfords Bring to the market this stunning apartment in Dorchester Court on London Road. This delightful flat boasts a modern finish with two cosy bedrooms, perfect for a small family or professionals looking for a comfortable living space. Short distance to Camberley Town Centre. Available with in just over two months notice.

Key features

- Two Bedroom Apartment
- Available With Just Over Two Months Notice
- Minimum 12 Month Let
- Balcony
- Executive Apartment In Camberley, Surrey
- Close To Town centre location and close to Camberley station, A30 & M3
- EPC C
- Council Tax Band D
- Secure Underground Parking
- Large Reception Room



35 Plough Road
Hampshire
GU46 7UW
01276 903006

surreylettings@waterfords.co.uk
<https://www.waterfords.co.uk/>